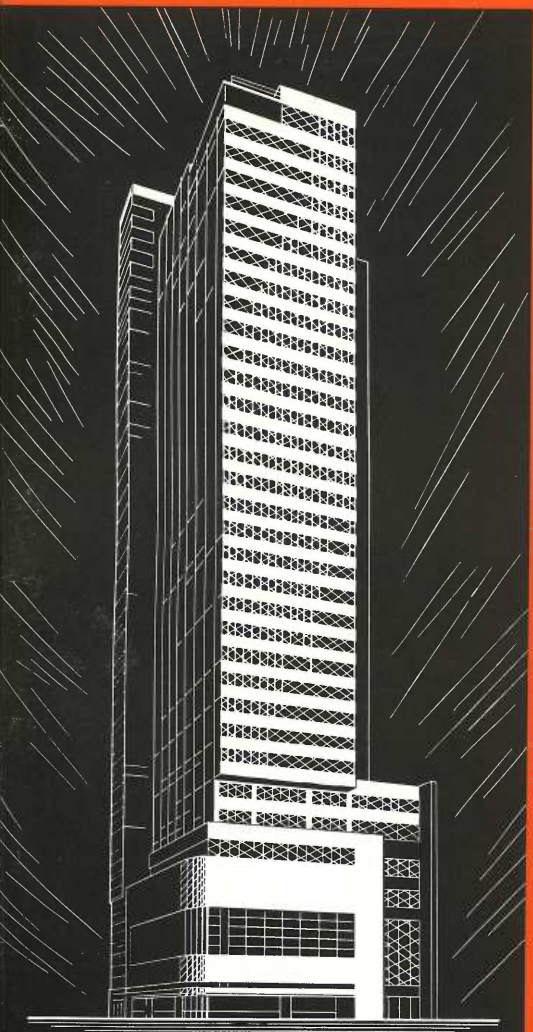


CONFERENCE REGISTRATION



THE RECENT PAST 2

PRESERVING

PHILADELPHIA, PENNSYLVANIA

OCTOBER 11-13, 2000

HIGHLIGHTS AT A GLANCE

CONFERENCE AND COLLABORATIVE PROGRAMS

OCTOBER 9–13

- Over 70 conference presentations on evaluating, protecting, reusing, repairing, and restoring properties from the recent past
- Special trade exposition featuring companies with products for preserving twentieth-century buildings
- Comprehensive *Preserving the Recent Past 2 Handbook*, prepared especially for the conference
- Pre-conference APT technical workshops on modern historic concrete, coatings for architectural surfaces, and twentieth-century sculpture
- Pre-conference symposium on preserving the twentieth-century curtain wall
- AIA Continuing Education System Learning Units
- Exhibition on the PSFS Building
- Book signings with speakers
- Behind-the-scene tours

CONTENTS

Conference Program	8
Registration Form	17
Website and General Information	17
Hotel Information	20
APT Annual General Meeting	23
Curtain Wall Symposium	25
APT College of Fellows Lecture	27
Modern Historic Concrete Workshop	28
Coatings for Architectural Surfaces Workshop	28
Twentieth-Century Sculpture Workshop	29
Behind-the-Scene Tours	30
AIA Continuing Education System Learning Units	35

JOIN US IN PHILADELPHIA!

Preserving the Recent Past 2, the sequel to the ground breaking and successful conference held in 1995, provides a special opportunity to obtain essential information about efforts to identify, protect, reuse, and preserve historic properties from this century. We hope you will join us at the historic PSFS Building to hear from over 70 leading experts in various disciplines.

The challenges associated with preserving the recent past are many and complex, and the information shared at the conference will be invaluable. Noted architect Robert Venturi, FAIA, author of *Complexity and Contradiction in Architecture* and, most recently, *Iconography and Electronics upon a Generic Architecture: A View From the Drafting Room*, and David De Long, professor of architecture at the University of Pennsylvania, will deliver the keynote addresses. Participants will also be treated to a conversation with Case-Study House architect Ralph Rapson, FAIA, during the opening plenary session. An address by Richard Longstreth, George Washington University professor and author of *City Center to Regional Mall*, will highlight the closing session, which will conclude with remarks from APT president David Woodcock, FAIA, professor of architecture, Texas A&M University.

With the many conference sessions, exposition, seminars, curtain wall symposium, technical workshops, and the behind-the-scene tours, we are confident that you will find the program informative, productive, and enjoyable.



SPONSORS

NATIONAL PARK SERVICE, NATIONAL CENTER FOR PARTNERSHIPS AND STEWARDSHIP, TECHNICAL PRESERVATION SERVICES.



Technical Preservation Services (TPS) of the Heritage Preservation Services Division in Washington, D.C., produces a wide variety of educational materials on preserving, rehabilitating, and restoring historic buildings. These include the

Preservation Briefs and *Preservation Tech Notes* series, in-depth source books, web pages, and videos. TPS also develops workshops, conferences, and other training in partnership with universities, public agencies, and professional organizations, and administers the Federal historic preservation tax incentive program.

ASSOCIATION FOR PRESERVATION TECHNOLOGY INTERNATIONAL



The Association for Preservation Technology International (APT) is a multidisciplinary membership organization dedicated to the practical application of the principles and techniques necessary for the care and wise use of the built environment. Members are involved in the systematic application of the knowledge of methods and materials to the maintenance, conservation, and protection of historic and world heritage buildings, sites, and artifact resources for future use and appreciation.

NATIONAL PARK SERVICE, PHILADELPHIA SUPPORT OFFICE, STEWARDSHIP & PARTNERSHIPS, CULTURAL RESOURCES GROUP



The Cultural Resources Group provides parks and partners in the Northeast Region with professional and technical services to identify and preserve our national heritage. Major activities include coordinating resource inventories such as the

Cultural Landscape Inventory and the System-wide Archeological Inventory Program; administrating the Surplus Property Program and the HABS/HAER mitigation documentation program; assisting in the care of public sculpture and monuments and the preservation of archeological sites; and managing the National Historic Landmark (NHL) program for over 1,200 NHLs.

GENERAL SERVICES ADMINISTRATION



The General Services Administration (GSA) is a federal agency that serves as steward for 450 historic federally owned buildings nationwide. Through its Historic Buildings and the Arts, Urban Livability, and Design Excellence programs, GSA works to maintain the architectural integrity of America's public buildings while keeping them useful, safe, and accessible to the public.

PRESERVING THE RECENT PAST IS ALSO SPONSORED BY:

- Historic Preservation Education Foundation
- Society of Architectural Historians
- Public Works and Government Services Canada
- Parks Canada
- Society for Commercial Archeology
- DoCoMoMo

COOPERATING ORGANIZATIONS

- Preservation Alliance of Greater Philadelphia
- Preservation Pennsylvania
- Pennsylvania Historical and Museum Commission
- Graduate Program in Historic Preservation, University of Pennsylvania
- American Institute of Architects, Philadelphia Chapter
- Alliance for Landscape Preservation
- U.S. International Council on Monuments and Sites
- National Conference of State Historic Preservation Officers
- National Council for Preservation Education

Partial funding for this conference comes from the National Park Service's Cultural Resource Training Initiative, General Services Administration's Center for Expertise, and National Conference of State Historic Preservation Officers.

WHO SHOULD ATTEND?

ARCHITECTS, ENGINEERS, AND CONSERVATORS

to obtain state-of-the-art information about conservation issues and approaches to repairing and upgrading modern materials, assemblies, and systems

BUILDING MANAGERS AND OWNERS

to learn about practical and appropriate maintenance and repair techniques for twentieth-century buildings

PLANNERS AND CULTURAL RESOURCE MANAGERS

to learn about successful approaches to identifying, evaluating, and protecting historic properties built after World War I

STATE HISTORIC PRESERVATION OFFICERS AND OTHER GOVERNMENT OFFICIALS

to learn how professionals are addressing the full range of issues associated with preserving resources from the recent past

HISTORIANS AND ARCHITECTURAL HISTORIANS

to examine further the historical significance of the suburbs, transportation buildings and systems, public buildings, and urban plans

LANDSCAPE ARCHITECTS

to become better informed about the preservation challenges and resources associated with contemporary landscapes

SPECIAL FEATURES

PRESERVING THE RECENT PAST 2 HANDBOOK

Attendees will receive a large illustrated handbook of papers by conference presenters, as well as other reference material.

HISTORICAL EXHIBIT ON THE PSFS BUILDING

A special historical exhibit of the Philadelphia Savings Fund Society (PSFS) Building, a National Historic Landmark, will be on display throughout the week.

CURTAIN WALL SYMPOSIUM

A two-day pre-conference symposium on Preserving the Twentieth-Century Curtain Wall sponsored by the Association for Preservation Technology International, will explore issues related to evaluation, repair, and upgrade of curtain walls on historic buildings.

TECHNICAL WORKSHOPS

Three technical workshops will precede the conference on the subjects of modern historic concrete, coatings for architectural surfaces, and twentieth-century sculpture. Enrollment is limited for each of these two-day programs.

SPECIAL SEMINARS

Two special seminars on modern heritage—one on advocacy issues and one on authenticity—will be held during the main conference.

EXPOSITION FOR MODERN BUILDINGS

Products specifically manufactured for repairing and restoring twentieth-century historic buildings will be gathered and on view. Attendees will see first-hand specialized products and services for buildings from the recent past. The Exposition will be an opportunity to learn about the special capabilities of these companies.

BOOK SIGNINGS

You won't want to miss the book signings, including Ralph Rapson, FAIA, who has been closely involved with the modern movement in architectural design since the 1930s and about whom a stunning monograph has recently been published.

CONTINUING EDUCATION CREDITS

AIA continuing Education System Learning Units (LUs) will be offered to conference, workshops, and symposium participants (up to 38.5 LUs and 35.5 HSWs; see page 35 for more details).

ASSOCIATION FOR PRESERVATION TECHNOLOGY ANNUAL MEETING

The annual General Meeting of the Association for Preservation Technology International will be held on October 12.

CONFERENCE PROGRAM

All events will be located in the Loews Philadelphia Hotel (PSFS Building) unless otherwise noted.

SUNDAY, OCTOBER 8

6:30 p.m.— REGISTRATION FOR PRE-CONFERENCE SYMPOSIUM AND WORKSHOPS
3rd Floor, Lobby

MONDAY, OCTOBER 9

7:45 a.m.— REGISTRATION FOR PRE-CONFERENCE SYMPOSIUM AND WORKSHOPS
Symposium: *Commonwealth Hall Foyer*
Workshops: *3rd Floor Lobby*

8:30 a.m.— PRE-CONFERENCE SYMPOSIUM AND WORKSHOPS
5:30 p.m.— Preserving the Twentieth-Century Curtain Wall Symposium (*see page 25*)
Technical Workshops on Modern Historic Concrete, Coatings for Architectural Surfaces, and Twentieth Century Sculpture (*see pages 28–29*)

6:00 p.m.— Symposium and Workshop Reception
33rd Floor

TUESDAY, OCTOBER 10

8:30 a.m.— PRE-CONFERENCE SYMPOSIUM AND WORKSHOPS
5:00 p.m.—
5:30 p.m.— CONFERENCE REGISTRATION
3rd Floor Lobby
7:30 p.m.—
6:15 p.m.— APT COLLEGE OF FELLOWS LECTURE
(open to all)
Washington Room (see page 27)
CONSERVING HISTORICAL ENGINEERING WORKS:
A PERSONAL PERSPECTIVE
Roland Paxton, OBE, PhD, FICE, FRSE

WEDNESDAY, OCTOBER 11

7:00 a.m.— CONFERENCE REGISTRATION
Millennium Hall Foyer
8:30 a.m.— OPENING SESSION
10:25 a.m.— *Millennium Hall*

INTRODUCTORY REMARKS

CHARLES E. FISHER
Technical Preservation Services,
National Park Service

KEITH EVERETT
Superintendent, Philadelphia Support Office,
Northeast Region, National Park Service

DAVID WOODCOCK, FAIA
President, Association for Preservation Technology
International

THOMAS C. JESTER
Program Chair, Preserving the Recent Past 2

KEYNOTE ADDRESSES

ROBERT VENTURI, FAIA, FRIBA
Venturi, Scott Brown and Associates, Inc.

DAVID G. DE LONG
Professor of Architecture, Graduate Program
in Historic Preservation, University of Pennsylvania

A CONVERSATION WITH RALPH RAPSON, FAIA



10:25 a.m.— Break
 10:45 a.m.—

10:30 a.m.— **EXPOSITION OPENS**
Regency Ballroom C

10:45 a.m.— **SESSION A**
 12:15 p.m. **LISTING AT HOME AND ABROAD**
 Moderator: Carol D. Shull, Keeper of the National Register of Historic Places, National Park Service

**FROM THE GLASS HOUSE TO STONEWALL:
 NATIONAL REGISTER RECOGNITION
 OF THE RECENT PAST**
 Beth L. Savage, Architectural Historian,
 National Park Service

THE SHIFTING SIGNPOSTS OF SIGNIFICANCE
 Deborah Edge Abele, Historic Preservation Officer,
 City of Scottsdale, Arizona

**THE ENGLISH HERITAGE EXPERIENCE:
 IDENTIFYING POST-WAR BUILDINGS
 FOR STATUTORY PROTECTION**
 Peter Smith, Inspector of Historic Buildings,
 English Heritage

10:45 a.m.— **SESSION B**
 12:15 p.m. **MODERN MASONRY**
 Moderator: William G. Foulks,
 Building Conservation Associates

**THE GRILL IS GONE:
 THE RISE AND FALL OF CONCRETE SCREEN BLOCK**
 Anthony Rubano, Project Designer,
 Illinois Historic Preservation Agency

**MODERN MASONRY CHALLENGES
 AND SOLUTIONS: I — ASSEMBLIES**
 Michael Schuller, President,
 Atkinson-Noland and Associates

**MODERN MASONRY CHALLENGES
 AND SOLUTIONS: II — SOLUTIONS**
 A. Elena Charola, Independent Consultant, and
 Lecturer, Graduate Program in Historic Preservation,
 University of Pennsylvania

12:15 p.m.— Luncheon and Lecture (ticket required)
 1:45 p.m. **PRESERVING THE PSFS BUILDING**
 Robert Powers, Architectural Conservator,
 Powers and Company
 Arthur Jones, AIA, Principal,
 Bower Lewis Thrower Architects

1:45 p.m.— **SESSION A**
 3:15 p.m. **IN YOUR NEIGHBORHOOD**
 Moderator: Richard Longstreth, Professor and
 Director, Graduate Program in Historic Preservation,
 George Washington University

STOREFRONTS OF TOMORROW: 1940–1970
 Mike Jackson, FAIA, Chief Architect, Illinois
 Historic Preservation Agency

**BANKING ON THE FUTURE:
 MODERNISM AND THE LOCAL BANK**
 Carol J. Dyson, Architectural Coordinator,
 Illinois Historic Preservation Agency

**FROM BIG BEAR TO BIG BOX: TWENTIETH-
 CENTURY SUPERMARKETS IN NEW JERSEY**
 Meredith Arms Bzdak, Architectural Historian,
 Ford Farewell Mills and Gatsch Architects

1:45 p.m.— **SESSION B**
 3:15 p.m. **AUTHENTICITY SEMINAR**
 Moderator: Theo Prudon, Architect,
 Cowley and Prudon Architects

**PANELISTS: Paul Bentel, Associate Professor,
 Columbia University; Dinu Bumbaru, Director of
 Programs, Heritage Montreal; Susan MacDonald,
 Architect, Principal Heritage Officer,
 New South Wales Heritage Office, Australia**

1:45 p.m.— **SESSION C**
 3:15 p.m. **THIN CLADDING AND THE CURTAIN WALL**
 Moderator: Kent S. Diebolt, President,
 Vertical Access LLC

**STRATEGIES FOR REPAIRING CURTAIN WALLS
 FROM THE EXTERIOR**
 Don Erwin, Associate, LZA Technology

**HOW THIN IS TOO THIN:
 MODERN THIN CLADDING CONSIDERATIONS**
 Dennis Johnson, Senior Consultant,
 Wiss, Janney, Elstner Associates

COMING OF AGE FOR THE CURTAIN WALL
David Thomas Yeomans, Liverpool University, School
of Architecture and Building Engineering, England

3:15 p.m.— Break

3:30 p.m.

3:30 p.m.— **SESSION A**

5:00 p.m.

STUDYING AND SAVING SUBURBS

Moderator: Wayde Brown, Department of Housing
and Municipal Affairs, Nova Scotia

RANCH HOUSES ARE NOT ALL THE SAME

David Bricker, Architectural Historian,
California Department of Transportation

**PRESERVING A POST-WAR MODERNIST
SUBDIVISION**

Diane Wray, Historic Preservation Consultant

LANDSCAPE ARCHEOLOGY MEETS LEVITTOWN:

A VIEW FROM BOWIE, MARYLAND

Julie H. Earnstein, Archeologist,
Department of Archeology, Boston University

3:30 p.m.— **SESSION B**

5:00 p.m.

AMERICANS ON THE MOVE

Moderator: Rebecca A. Shiffer,
Architectural Historian, National Park Service

**THE UBIQUITOUS PARKING GARAGE:
WORTHY OF PRESERVATION?**

Ronald E. Schmitt, Associate Professor
and Architect, School of Architecture,
University of Illinois at Urbana-Champaign

PRESERVING MODERN BRIDGES

Mary McCahon, Engineer,
Abba Lichtenstein and Associates

THE NATIONAL QUEST FOR ROADSIDE BEAUTY

Shaun Eyring, Landscape Architect,
National Park Service

3:30 p.m.— **SESSION C**

5:00 p.m.

LOOKING AT THE WINDOW:

WINDOWS AND GLAZING

Moderator: Charles E. Fisher, National Park Service

**CRITERIA FOR MODERN WINDOW REPAIR
AND REPLACEMENT**

Mark Morden, Architect,
Wiss, Janney, Elstner Associates

INDUSTRIAL STEEL SASH:

RESTORATION AND REPLACEMENT STRATEGIES

Henry Moss, AIA, Principal,
Bruner/Cott and Associates

5:30 p.m.—

EXPOSITION CLOSURES

6:45 p.m.—

CONFERENCE RECEPTION

BOOK SIGNINGS

THURSDAY, OCTOBER 12

8:30 a.m.—

SESSION A

10:00 a.m.

THE RECENT PAST'S PUBLIC REALM

Moderator: Lonnie J. Hovey, AIA,
Project Manager, Vitetta Group

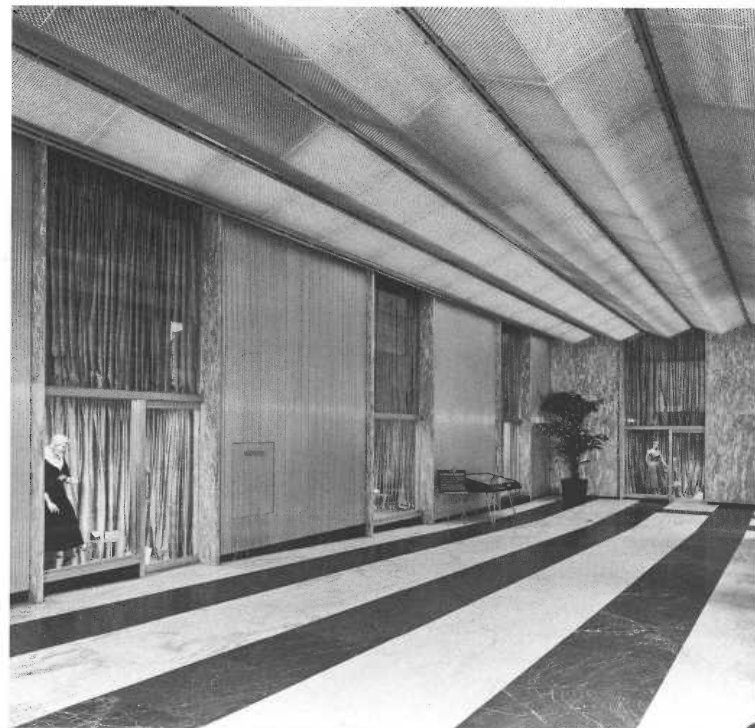
TRADITIONS AND THE FUTURE:

THE UNITED STATES AIR FORCE ACADEMY

Duane Boyle, Campus Architect,
U.S. Air Force Academy

EVALUATING THE MISSION 66 VISITOR CENTER

Sarah Allaback, Architectural Historian



ALCOA Building (Harrison and Abramovitz, 1953),
Courtesy National Building Museum

**PRESERVING TWENTIETH-CENTURY SCHOOLS
IN BUFFALO**

Paul J. McDonnell, R.A., Associate Architect,
Division of Plant Services and School Planning,
Buffalo Public Schools

8:30 a.m.— **SESSION B**

10:00 a.m. **SIMPLIFYING BUILDING WITH STANDARDIZATION**

Moderator: Derek Trelstad, Project Director,
LZA Technology

**THE ROLE OF BUILDING CODES
IN STANDARDIZATION**

Marilyn Kaplan, Architect, Preservation Architecture

**INDUSTRY STANDARD: THE STANDARDIZATION
OF BUILDING MATERIALS IN RESIDENTIAL
CONSTRUCTION OF THE TWENTIETH CENTURY**

Richard Pieper, Principal and Director of
Preservation, Jan Hird Pokorny Associates and
Adjunct Professor, Columbia University

**CHALLENGING CONTEMPORARY REPAIR
METHODS: THE IMPACT OF STANDARDIZATION
ON THE PRESERVATION OF MID-CENTURY
BUILDINGS AND STRUCTURES**

Susan MacDonald, Principal Heritage Officer,
New South Wales Heritage Office, Australia

8:30 a.m.— **SESSION C**

10:00 a.m. **KEEPING A LID ON IT**

Moderator: Natalie Bull, Architectural Conservation
Analyst, Heritage Conservation Program,
Public Works and Government Services Canada

**RESTORATION OF THE ROOF TERRACE PLAZA AT
THE KENNEDY CENTER FOR THE PERFORMING ARTS**

Edward Gerns, Senior Architect/Engineer, Wiss,
Janney, Elstner Associates

**RESTORATION OF THE MAIN DOME AT
THE BUFFALO AND ERIE COUNTY BOTANICAL
GARDENS, BUFFALO, NEW YORK**

Michael Lennon, AIA, Project Architect,
Flynn Battaglia Architects

**ASBESTOS-CEMENT
HISTORIC BUILDING MATERIALS**

Amy Lamb Woods, University of Illinois

10:00 a.m.— Break

10:15 a.m. **EXPOSITION OPENS**

10:15 a.m.— **SESSION A**

11:45 p.m. **HOW WE LIVE**

Moderator: Deborah Bruckman Maylie,
Architectural Historian, National Park Service

**PUBLIC HOUSING: RECOGNIZING
THE VALUE AND POTENTIAL OF CHICAGO'S
HISTORIC LOW-INCOME DEVELOPMENTS**

Elizabeth Milnarik, Designer, Page and Turnbull

**THE FIRST DEVELOPERS OF PUERTO RICO:
A RE-ASSESSMENT OF FOUR FAMILY HOUSING
AREAS AT FORT BUCHANAN, PUERTO RICO**

J. W. Joseph, President, New South Associates

10:15 a.m.— **SESSION B**

11:45 p.m. **THE INSIDE STORY**

Moderator: Kathleen Catalano Milley,
Architectural Historian, National Park Service

**YESTERDAY'S ARCHITECTURAL HAUTE COUTURE:
WHEN HIGH STYLE GOES OUT OF STYLE**

Caroline Rebecca Alderson, Program Manager,
Historic Buildings, General Services Administration,
Historic Buildings and the Arts Center of Expertise

SHELLAC, STARCH, AND WAX FINISHES

Frank S. Welsh, Conservation Microscopist,
Welsh Color and Conservation

**DROPPING THE FACTS: TECHNICAL INFORMATION
ON PRESERVING SUSPENDED CEILINGS**

Sara B. Paschke, Bauer Latoza Studio

10:15 a.m.— **SESSION C**

11:45 p.m. **LIGHTING THE FUTURE**

Moderator: Bonnie Wilkinson, Historic Architect,
Pennsylvania Historical and Museum Commission

**A BRIEF HISTORY OF MODERN LIGHTING
TECHNOLOGY AND EFFECTS**

Edwin Robinson, Museum and Lighting Designer,
Independent Consultant

**LIGHTING FOR THE RESTORATION
OF TWENTIETH-CENTURY BUILDINGS**

Sandra M. Stashik, Principal,
Grenald Waldron Associates

THE ATLANTIC CITY CONVENTION HALL:
A MODERN INTERPRETATION OF
AN INNOVATIVE INDIRECT LIGHTING SCHEME
Leila Y. Hamroun, Graduate Architect,
Watson and Henry Associates

11:45 p.m.— Luncheon and Lecture (ticket required)
THE END OF THE ROAD:
VANISHING HIGHWAY ARCHITECTURE
John Margolies, Writer, Photographer and Lecturer

1:15 p.m.— SESSION A
2:45 p.m. EARTHBOUND MODERNISM

RECENT ADVANCEMENTS IN PRESERVING
MODERN LANDSCAPE ARCHITECTURE
Charles A. Birnbaum, FASLA, Coordinator,
Historic Landscape Initiative, National Park Service

THOMAS CHURCH, GARRETT ECKBO,
AND THE POST-WAR CALIFORNIA GARDEN
Marc Treib, Professor of Architecture,
University of California at Berkeley

SOUTHERN LIVING MAGAZINE: PURVEYOR
OF THE MODERN SOUTHERN LANDSCAPE
Lucy Lawliss, Historical Landscape Architect, Chief
Cultural Landscape Program, National Park Service

1:15 p.m.— SESSION B
2:45 p.m. METAL MANIA
Moderator: Dennis Montagna, Monument
Research and Preservation, National Park Service

EFFECTS OF POLLUTANTS ON ATMOSPHERIC
CORROSION OF ARCHITECTURAL MATERIALS
Robert Baboian, Consultant, RB Corrosive Services

NICKEL – OVER, UNDER, AND IN:
PLATING AND ALLOYS, THEIR NATURE,
TECHNOLOGY AND CONSERVATION
Melissa S. Meighan, Conservator of Decorative
Arts and Sculpture, Philadelphia Museum of Art,
and Lecturer, Graduate Program in Historic
Preservation, University of Pennsylvania

PRESERVING A PROTOTYPE:
BUCKMINSTER FULLER'S DYMATION HOUSE
James Ashby, Architectural Conservator,
Henry Ford Museum and Greenfield Village

REGISTRATION FORM

PRESERVING THE RECENT PAST CONFERENCE AND COLLABORATIVE PROGRAMS

Your registration cannot be processed unless payment accompanies this form. There is a late fee for those registrations postmarked after September 8, 2000. Registration fees will be refunded (less \$40) for cancellations postmarked by September 8, 2000. For cancellations made after September 8, 2000, no refunds will be provided. The technical workshops and tours have limited enrollment, so early registration is encouraged.

Please Print

Name _____

Title _____

Organization _____

Mailing address _____

Telephone _____

Fax _____

E-mail _____

I plan to stay at the Loews Philadelphia Hotel.

A confirmation card will be sent upon receipt of your complete registration. For further registration or general conference information call (202) 343-6011 or check the conference website at <http://www2.cr.nps.gov/tps/recentpast2.htm>.

PLEASE COMPLETE REVERSE SIDE OF REGISTRATION FORM

CONFERENCE AND EXPOSITION

- \$340 Early Registration Fee for Conference and Exposition
October 11–13
includes Opening Reception on October 11
Postmarked before September 8, 2000
- \$385 Registration Fee for Conference and Exposition
October 11–13
includes Opening Reception on October 11
Postmarked after September 8, 2000
- \$175 Student Registration for Conference
A photocopy of student I.D. card must be provided with
a signed statement by faculty on school letterhead to the
effect that student is enrolled full-time at the university or
college to receive student registration price.
- \$ 56 Conference Luncheon Package
October 11 and 12
- \$ 15 Reception on October 12 sponsored by APT
- \$295 Symposium:
Preserving the Twentieth-Century Curtain Wall
October 9–10
Includes October 9 and 10 luncheons
and October 9 reception
- \$555 Combination Package: Conference, Exposition, and
Curtain Wall Symposium
October 9–13
- \$420 Pre-Conference Technical Workshops
October 9–10
Includes October 9 and 10 luncheons
and October 9 reception

Indicate 1st and 2nd Choice where applicable:

- Concrete
- Paints and Coatings
- Sculpture

AFTERNOON TOURS, OCTOBER 13

All tours run simultaneously; please select and pay for your first choice.
Indicate 1st, 2nd, 3rd and 4th choices. Registrants may bring a guest at
regular tour price. Please indicate next to tour price for extra person.

- \$15 Art Deco Philadelphia (walking)
- \$15 Around Center Square:
Modernism to Post-Modernism (walking)
- \$25 Philadelphia's Grand Boulevard
Benjamin Franklin Parkway
- \$25 Campus Masterworks
- \$35 Diners and the Changing Look of Modernity
- \$35 Twentieth-Century Trenton
- \$35 Japanese Modern
- \$35 Wright, Kahn, and Beyond
- \$35 Rehabbing the Recent Past
- \$35 High-Rise Living
- \$35 Venturi and Kahn in Chestnut Hill

\$ _____ Total amount enclosed in U.S. dollars

Make checks payable to **PRESERVING THE RECENT PAST.**

Purchase orders from government agencies are accepted provided
payment is not made electronically.

- Check Enclosed
- Government Purchase Order Enclosed
- Charge to: Visa MasterCard

Card number _____

Expiration date _____

Print name exactly as indicated on credit card:

Signature _____

MAIL TO: PRESERVING THE RECENT PAST 2
P.O. Box 75207
Washington, D.C. 20013-5207

HOTEL INFORMATION

PRESERVING THE RECENT PAST CONFERENCE, SYMPOSIUM AND WORKSHOPS

October 9–13, 2000

Loews Philadelphia Hotel (PSFS Building)

Single \$159; Double \$179

Government Rate \$118 single, \$153 double. (Valid government identification is required upon check-in. A limited number of rooms are available.)

Rooms are subject to 14% sales tax.

RESERVATIONS MUST BE RECEIVED BY SEPTEMBER 8, 2000.

Requests made after this date may be subject to regular hotel rates. Early reservations are encouraged due to anticipated registration. Reservation for arrival after 6:00 p.m. must be made by major credit card to be guaranteed.

Check In Time: 3:00 p.m.

Check Out Time: 12:00 noon

For hotel reservations, call (215) 627-1200 and reference the *Preserving the Recent Past 2 Conference*.

ACCOMMODATIONS

In 1932, the completion of Howe and Lescaze's Philadelphia Savings Fund Society (PSFS) Building ushered in the age of modernism in Philadelphia. Now a Loews Hotel and the site of the conference, it remains one of the most important International Style buildings in North America.

The hotel opened in April 2000. The building provides state-of-the-art technical facilities and contains 583 guest rooms. The hotel is conveniently located in the heart of "Center City" Philadelphia, at 1200 Market Street.

A block of rooms at reduced rates is being held at the hotel for conference registration. Early room reservations are strongly recommended to insure receiving the special rates. Room reservations may be made by telephone to the hotel. Please be sure to reference the *Preserving the Recent Past 2 Conference*.

TRANSPORTATION

The Loews Hotel has valet parking and is only 10 minutes from Amtrak's Northeast Corridor service. Convenient public transportation is available from the Philadelphia International Airport. Taxi service from the airport is \$20. Lady Liberty Shuttle Service and USA Limousine Service are \$8 one way from the airport.

1:15 p.m.—

2:45 p.m.

SESSION C

PLASTICS AND SUBSTITUTE MATERIALS

Moderator: Thomas C. Jester,
Martinez & Johnson Architecture

PRESERVING THE MAGIC AT MICKEY MOUSE'S WORLD

Bob Minnick, Technical Director, Architectural and
Facilities Engineering, Walt Disney World Resort

THE DEVELOPMENT AND USES OF FORMICA

Nicole Stull, Preservation Planner,
Building Conservation Associates, Inc.

THE HOUSE THAT PLASTICS BUILT: PRESERVING LAMINATES AT THE RALPH WILSON HOUSE

Grace Jeffers, Decorative Arts Historian, Curator,
and Instructor, Fashion Institute of Technology

2:45 p.m.—

3:05 p.m.

3:05 p.m.—

5:00 p.m.

Break

SESSION A

GOING GRASSROOTS

Moderator: Susan Bronson, OAQ, RAIC,
Susan Bronson Architect, and Professor,
Université de Montréal

WINNIPEG ARCHITECTURE: MIDDLE OF THE CONTINENT, MIDDLE OF THE CENTURY

Susan Algie, Heritage Resources Planner,
Parks Canada

GRASS ROOTS EFFORTS IN TEXAS

Greg Smith, National Register Coordinator,
Texas Historical Commission

RAISING THE AWARENESS OF HAIFA'S RICH MODERNIST PAST: CHOOSING APPROPRIATE STRATEGIES FOR DIVERSE TARGETS

Gilbert Herbert, Professor Emeritus, Technion:
Israel Institute of Technology

SAVING THE LEGACY

OF CUBA'S MODERN ARCHITECTURE

Eduardo Luis Rodriguez, Architect and Historian/
Editor in Chief, *Arquitectura Cuba*

3:10 p.m.—

5:00 p.m.

SESSION B

URBAN PLANNING:

YESTERDAY, TODAY, AND TOMORROW

Moderator: Lisa Kolakowsky Smith,
Architectural Historian, National Park Service

**PRESERVING THE LEGACY OF EDMUND N. BACON
AND POSTWAR PHILADELPHIA**

Madeline L. Cohen, Professor, Art History,
Community College of Philadelphia

**TAKE A RIDE IN THE MARK II:
ROADMAP TO POST WORLD WAR II
RESIDENTIAL DESIGN GUIDELINES**

Rory Hays, Board Member,
National Alliance of Preservation Commissions

**THE ROLE OF FACADE ORDINANCES IN
PRESERVING THE RECENT PAST**

Michael A. Petermann, Senior Architect,
Wiss, Janney, Elstner Associates

3:10 p.m.—

SESSION C

5:00 p.m.

SAVING STRUCTURE AND SYSTEMS

Moderator: Sharon C. Park, FAIA, Chief, Technical
Preservation Services, National Park Service

**CLIMATE CONSIDERATION AND ENERGY
PERFORMANCE OF FRANK LLOYD WRIGHT'S ANN
PFEIFFER CHAPEL, FLORIDA SOUTHERN COLLEGE**
Anat Geva, Architect, Visiting Assistant Professor,
Department of Architecture, Texas A&M University

**TOMORROW'S HOUSE TODAY:
TAKING STOCK OF AN EARLY PASSIVE SOLAR
PROTOTYPE BY HENRY WRIGHT, JR.**
Thomas E. Solon, AIA, Historical Architect,
National Park Service

**MULTIPLE STRUCTURAL CAUSES
OF GLAZED BRICK FAILURE**

Donald Friedman, Director of Preservation,
LZA Technology

**SOARING OR CRASHING? THE CHALLENGES OF
PRESERVING THIN-SHELL CONCRETE STRUCTURES**

Thomas E. Boothby, Associate Professor
of Architectural Engineering, The Pennsylvania
State University

5:15 p.m.—

**ANNUAL GENERAL MEETING
OF THE ASSOCIATION FOR PRESERVATION
TECHNOLOGY INTERNATIONAL**

6:30 p.m.

5:45 p.m.—

EXPOSITION CLOSES

6:45 p.m.—

CONFERENCE RECEPTION (ticket required)
*Sponsored by the Association
for Preservation Technology International*

FRIDAY, OCTOBER 13

8:30 a.m.—

SESSION A

10:00 a.m.

AT PLAY

Moderator: Kaaren R. Dodge,
Architectural Historian, National Park Service

**ON NOT BUILDING FOR POSTERITY:
LESSONS FROM A THEMATIC STUDY
OF POST-WAR THEATRES**

Catherine Croft, Architectural Advisor,
The Theatres Trust, England,
and Vice Chair, Twentieth Century Society

IN SEARCH OF TIKI

Nathalie Wright, National Register Coordinator,
Ohio Historic Preservation Office

**PALM SPRINGS: A PLAYGROUND
FOR ENTERTAINMENT AND LEISURE**

Alan Hess, Architect and Architecture Critic,
San Jose Mercury News



Norm's Coffee Shop, Los Angeles
(Armet & Davis, 1954), courtesy Eldon Davis.

8:30 a.m.—

SESSION B

10:00 a.m.

ADVOCACY SEMINAR

Moderator: Gordon Fulton, Architectural Historian, Parks Canada

PANELISTS: Diane Wray, Preservation Consultant; Susan Algie, Heritage Resources Planner, Parks Canada; Chandler McCoy, President, Northern California Chapter of DoCoMoMo/US

8:30 a.m.—

SESSION C

10:00 a.m.

**WHAT COLORS MODERN HERITAGE:
PAINTS AND COATINGS**

Moderator: Mike Jackson, FAIA, Chief Architect, Illinois Historic Preservation Agency

COLOR PALETTES OF THE POST-WAR PERIOD

William W. Braham, PhD, AIA, Assistant Professor of Architecture, University of Pennsylvania

THE FALLACY OF INTENT:

**DESIGN, CONSTRUCTION AND REHABILITATION
OF THE GUGGENHEIM MUSEUM**

Frank G. Matero, Associate Professor of Architecture, University of Pennsylvania

**INNOVATION IN PAINTS AND COATINGS:
1945–1970**

Norman R. Weiss, Adjunct Associate Professor, Columbia University, and Senior Scientist, Integrated Conservation Resources

10:00 a.m.—

Break

10:15 a.m.

10:15 a.m.—

CLOSING SESSION

11:35 a.m.

INTEGRITY AND THE RECENT PAST

Richard Longstreth, Professor and Director, Graduate Program in Historic Preservation, American Studies Department, George Washington University

CLOSING REMARKS

David Woodcock, FAIA, President, Association for Preservation Technology International and Professor, College of Architecture, Texas A&M University

CONCLUDING REMARKS

12:00 p.m.—

TOURS

(See pages 30–35)

PRE-CONFERENCE SYMPOSIUM:

PRESERVING THE TWENTIETH-CENTURY CURTAIN WALL

Sponsored by the Association

for Preservation Technology International

The two-day curtain wall symposium will explore issues related to historical value, evaluation, and repair. Participants will learn about the behavior and performance of curtain wall systems and opportunities for modifying the curtain wall to meet contemporary standards and program requirements. The Twentieth-Century Curtain Wall poses particular challenges for designers, material scientists, and property managers. Defined as exterior finish systems that do not support gravity loads, curtain wall systems are required to control the movement of air, moisture, heat and light, and contribute to the aesthetics of the building. Modern curtain walls include metal and glass assemblies, thin stone cladding, composite systems, and concrete panels. Understanding the performance and deterioration of these assemblies and their component materials is critical to planning repair strategies, but the real challenge is in bringing these factors together in a project while respecting heritage value and design integrity.

This technical symposium is ideal for engineers and architects, technologists, material scientists, property managers, and project managers involved in curtain wall preservation and rehabilitation projects. Participants will gain knowledge about the behavior, performance, and heritage value of modern curtain wall systems, investigation methods and tools, and repair strategies. Case studies will be used to illustrate the struggle between the material scientist and the conservationist/designer, and provide examples of successful resolution of that struggle. Sessions on individual assemblies and materials will be linked with presentations on the broader issues of preservation and design, and question and answer periods will be structured into the agenda.

Course Coordinators: Harry Hunderman, FAIA, Principal, Wiss, Janney, Elstner Associates, and Natalie Bull, Architectural Conservation Analyst, Heritage Conservation Program, Public Works and Government Services, Canada

Symposium registration (includes October 9 and 10 luncheons and October 9 reception) \$295. Special discount for Symposium/Conference combined registration (see page 18).

Note: Symposium and APT technical workshops will run concurrently on October 9–10 (Monday and Tuesday).

MONDAY, OCTOBER 9

- 7:45 a.m.— **REGISTRATION**
Commonwealth Hall Foyer
- 8:30 a.m.— **SESSION I**
- 10:00 a.m. **INTRODUCTION**
Harry Hunderman, FAIA, Principal,
Wiss, Janney, Elstner Associates
- PRINCIPLES OF CURTAIN WALL DESIGN
AND PERFORMANCE**
Mark Lawton, P.E., Principal and Technical Director
for Building Engineering, Morrison Hershfield Limited
- HISTORY AND DEVELOPMENT
OF THE CURTAIN WALL**
David Thomas Yeomans, Professor,
Liverpool University, England
- 10:20 a.m.— **SESSION II**
- 12:00 p.m. **CONFLICTS AND CHALLENGES
IN PRESERVING CURTAIN WALLS**
Stephen J. Kelley, AIA, SE, Senior Consultant,
Wiss, Janney, Elstner Associates
- INVESTIGATION TOOLS AND TECHNIQUES**
Robert J. Kudder, Principal, Rath Rath & Johnson
- 1:30 p.m.— **SESSION III**
- 3:00 p.m. **GLASS AND METAL SYSTEMS**
Thomas A. Schwartz, P.E., President/Principal,
Simpson Gumpertz and Heger
- FOCUS ON GLASS**
Joseph E. Minor, P.E., Research Professor,
University of Missouri—Rolla
- 3:30 p.m.— **SESSION IV**
- 5:00 p.m. **AUTHENTICITY AND THE CURTAIN WALL:
MODERATED DISCUSSION**
Susan Bronson, OAQ, RAIC,
Susan Bronson Architecte, and Professor,
Université de Montréal
- 6:00 p.m.— **RECEPTION**
33rd Floor

TUESDAY, OCTOBER 10

- 8:30 a.m.— **SESSION V**
- 10:00 a.m. **THIN STONE VENEER BUILDING FACADES:
EVOLUTION AND PRESERVATION**
Michael Scheffler, P.E., Consultant,
Wiss, Janney, Elstner Associates
- THIN STONE SYSTEMS: CONFLICTS BETWEEN
REALITY AND EXPECTATIONS**
Christopher Borgal, Senior Building Science and
Conservation Specialist, Morrison Hershfield Limited
- 10:20 a.m.— **SESSION VI**
- 12:00 p.m. **PRECAST CONCRETE SYSTEMS**
Tony Murray, President, Restruction Corporation
- COMPOSITE/STUCCO/EIFS SYSTEMS**
Jan Kalas, AIA, Senior Associate, LZA Technology
- 1:30 p.m.— **SESSION VII**
- 3:00 p.m. **SEALANTS AND COATINGS**
Thomas F. O'Connor, FAIA, FASTM,
Vice President and Director of Building Technology,
SmithGroup
- ENERGY CONSERVATION**
Mark Lawton, P.E., Principal and Technical Director
for Building Engineering, Morrison Hershfield Limited
- ROLE OF BUILDING SCIENTIST
IN HISTORIC CURTAIN WALL PROJECTS**
Mark Brook, P.ENG., Principal,
Brook Van Dalen & Associates, Limited
- 3:30 p.m.— **SESSION VIII**
- 5:00 p.m. **PANEL DISCUSSION**
Moderator: Stephen J. Kelley, AIA, SE,
Senior Consultant, Wiss, Janney, Elstner Associates

The APT College of Fellows invites you to its annual lecture on Tuesday evening featuring Professor Roland Paxton from Scotland. A cash-bar reception will follow. One of Britain's leading historians of civil engineering, Professor Paxton was honored in 1996 by H. M. Queen Elizabeth with membership of the Order of the British Empire for "services to the history of engineering." The recent conservation of the Laigh Milton Viaduct will be featured in his presentation. Designed by eminent engineer William Jessop, it is believed to be the world's oldest surviving viaduct on a public railway.

PRE-CONFERENCE TECHNICAL WORKSHOPS

Three two-day technical workshops sponsored by APT are being offered Monday and Tuesday, October 9–10 on the subjects of concrete, coatings and sculpture. All workshops and symposium (listed previously) will run concurrently. The reception on October 9, luncheons on October 9 and 10, and course materials are included.

A. MODERN HISTORIC CONCRETE

Registration Fee: \$420
Limited to 35 participants

This two-day technical workshop will address the physical and chemical characteristics of concrete, techniques of field and laboratory investigation, and methods of repair, restoration, and protection for historic concrete, focusing on the twentieth century. Participants will examine samples, review case studies, and take part in theoretical investigations led by experts.

Course leader: Paul Gaudette, Consultant, Wiss, Janney, Elstner Associates.

INSTRUCTORS:

Paul Gaudette, Consultant, Wiss, Janney, Elstner Associates
Tony Murray, President, Restruction Corporation
Lorne Simpson, Architect, Simpson Roberts Wappel Architects
Brad Shotwell, Petrographer, Wiss Janney Elstner Associates

B. COATINGS FOR ARCHITECTURAL SURFACES

Registration Fee: \$420
Limited to 35 participants

This two-day technical workshop will present a detailed summary of common and novel twentieth-century architectural coatings and discuss their aesthetic, economic, and performance characteristics. The course will also address the assessment of coating failures, identification of existing coatings, and techniques for repair. In addition, there will be a half day tour of the Rohm and Haas Company Research Center, where participants will look at a paint testing laboratory, exposure station, and analytical lab.

Course leader: Robert Self, Architectural Conservator at Monticello

INSTRUCTORS:

Richard Wolbers, Paintings Conservator, Winterthur Museum
Susan L. Buck, Conservator/Paint Analyst, Historic Paint and Architectural Services

Richard Cechner, Senior Chemist, Wiss, Janney, Elstner Associates
Sharon L. Tracy, Materials Scientist II, Wiss, Janney, Elstner Associates
Leonard L. Phelps, Senior Chemist, Wiss, Janney, Elstner Associates
John Stauffer, Director, Paint Quality Institute

C. TWENTIETH-CENTURY SCULPTURE: PRESERVING ART OF THE RECENT PAST

Registration Fee: \$420
Limited to 35 participants

This two-day technical workshop will focus on issues related specifically to twentieth-century sculptures, including the characteristics and behavior of the materials employed in their creation; the techniques used to investigate their condition; collections care; and conservation and artists' intent. Outdoor public monuments, as well as sculpture housed in museums and private collections, will be discussed. In addition to education sessions, the workshop will feature a visit to the conservation laboratories of the Philadelphia Museum of Art.

Course Coordinator: Dennis Montagna, Monument Research and Preservation, National Park Service, Philadelphia Support Office

INSTRUCTORS:

Margot Berg, Public Art Program Coordinator, City of Philadelphia
Michele Cohen, Director, Public Art for Public Schools, City of New York
Kathleen Garland, Conservator, Nelson-Atkins Museum, Kansas City, Missouri
Andrew Lins, Conservator, Philadelphia Museum of Art
Dennis Montagna, Monument Research and Preservation, National Park Service, Philadelphia Support Office
Glenn Wharton, Conservator, New York, New York



Vanna Venturi House (Robert Venturi, 1962),
Courtesy the Foundation for Architecture, Philadelphia

TOURS

ART DECO PHILADELPHIA

Walking Tour (Rain or Shine) – Tour Fee: \$15.00
Friday, October 13, 2000; 1:30 to approx. 3:30 p.m.

JOSEPH HARO

The Foundation for Architecture, Philadelphia

Beginning as a European movement and taking its name from the *Exposition Internationale des Arts Decoratifs* held in Paris in 1925, Art Deco architecture has “one foot in the past and one foot in the future.” As such, it may be viewed as a transitional style, bridging the gap from the turn-of-the-twentieth-century Beaux Arts neoclassicism to the stripped-down look of the International Style and the pure Modernism yet to come. The Art Deco buildings on this tour display their commitment to historicism with their applied Mayan and Aztec Indian ornamentation, while expressing their futuristic outlook with their streamlined verticality. Featured structures include the WCAU Building (Henry Sternfeld and Gabriel Roth, 1928) and the Drake Hotel (Ritter and Shay, 1929).

AROUND CENTER SQUARE: MODERNISM TO POST-MODERNISM

Walking Tour (Rain or Shine) – Tour Fee: \$15.00
Friday, October 13, 2000; 1:30 to approx. 3:30 p.m.

WARREN WILLIAMS, AIA

The Foundation for Architecture, Philadelphia

When William Penn founded Philadelphia in the late seventeenth century, he envisioned a center square at the heart of his “greene Country Towne,” one that would someday be lined by important public buildings. Two hundred years later, as the city developed westward, Penn’s dream became a reality. This tour focuses on two generations of commercial architecture around Center Square: the “Modernism” of the 1950s and 1960s, as seen in the Penn Center Complex (Vincent G. Kling and Associates, 1953), and the subsequent “Post-Modernism.” En route, participants will also have an opportunity to view earlier Beaux Arts and Art Deco styles, including Philadelphia’s most architecturally significant skyscraper, the PSFS Building, the first International Style building in the United States.

PHILADELPHIA’S GRAND BOULEVARD: THE BENJAMIN FRANKLIN PARKWAY

Bus and Walking Tour – Tour Fee: \$25.00
Friday, October 13, 2000; 1:15 to approx. 5:15 p.m.

MICHAEL P. NAIRN

Landscape Architect, South Street Design, Philadelphia

Conceived as part of the “city beautiful” movement, the Benjamin Franklin Parkway is Philadelphia’s broad diagonal boulevard connecting center city with Fairmount Park. It was constructed during the first third of the twentieth century after a design by the French landscape architect, Jacques Gréber (1882–1962). Instead of an urban thoroughfare lined with buildings, Gréber created a wedge-shaped park, which actually became more park-like over time, since many of the envisioned buildings were never constructed. Participants of this tour will travel the length of the parkway, learning its history, some of the recent proposals for its redevelopment, and details of its canopy tree rehabilitation program. The tour includes visits to two of the Parkway’s major structures, the Philadelphia Museum of Art and the Rodin Museum, as well as a stop at Logan Circle, in the center of the Parkway, to view some of the more imposing structures there, including The Franklin Institute, the Free Library, and the Municipal Court.

CAMPUS MASTERWORKS

Bus and Walking Tour – Tour Fee: \$25.00
Friday, October 13, 2000; 1:00 to approx. 5:00 p.m.

GEORGE THOMAS

Restoration Consultant/Historian and Lecturer,
University of Pennsylvania’s Historic Preservation Program

When the University of Pennsylvania moved to its present location in West Philadelphia in 1871, its setting was quite rural. Over the years, however, the campus has grown into a large urban complex with over 250 structures, covering 265 acres. This tour will visit some of the University’s most architecturally significant buildings, including the Richards Medical Research Laboratories (Louis Kahn, 1957–62); Hill House (1960), the only building in the city designed by Eero Saarinen; Irvine Auditorium (Horace Trumbauer, 1924); and Fisher Fine Arts Library (Frank Furness, 1888–90; restored 1991 by Venturi Scott Brown). The Architectural Archives at the Fisher Library is world-renowned as the repository of the Louis Kahn Collection, comprising the architect’s drawings, photographs, 100 models, and over 150 linear feet of his personal correspondence and office files.

DINERS & THE CHANGING LOOK OF MODERNITY

Bus Tour with Diner Lunch – Tour Fee: \$35.00

Friday, October 13, 2000; 12:15 to approx. 5:15 p.m.

BRIAN BUTKO

Projects Editor, Historical Society of Western Pennsylvania,
Pittsburgh

KEVIN PATRICK

Professor of Geography, Indiana University of Pennsylvania,
Indiana, Pennsylvania

Prefabricated diners have become cultural icons. They are photographed, celebrated, and lovingly restored, but rarely are their architecture and manufacture synthesized into broader historical and geographic themes. This tour not only looks at some of metro Philadelphia's nearly 100 diners, but also places them in the context in which they operate. Lunch will be served at the Mayfair Diner (O'Mahony, 1954) and dessert at the Oak Lane Diner (Paramount, 1950). Lots of other stainless steel diners will be seen, including one just trucked into town and restored. Have fun, while learning how diners have always reflected the changing image of modernity.

TWENTIETH-CENTURY TRENTON

Bus Tour with Box Lunch – Tour Fee: \$35.00

Friday, October 13, 2000; 12:00 to approx. 5:00 p.m.

ANNE WEBER, AIA

Senior Associate, Ford Farewell Mills and Gatsch, Architects,
Princeton, New Jersey

Trenton Makes, the World Takes." These words emblazoned in neon on a bridge across the Delaware River say it all. In the first half of the twentieth century, Trenton industries supplied building materials, tile, and steel to the world. A tour of the Homasote factory, still in full operation, will allow participants to view first-hand the manufacture of a building material that has been produced here since 1916. Afterwards, the group will visit Ellarslie, the Trenton City Museum, where Richard Hunter, a local archaeologist, will guide participants through an exhibition chronicling the Trenton pottery industry and discuss his own research and findings. Finally, at the New Jersey State House Annex (J. Osborne Hunt and Hugh A. Kelly, 1929–31), the group will see the installation of a number of twentieth-century building products, including Zenitherm, Absorbege, and Cushocel. As an added bonus, the tour will visit Louis Kahn's Bath House and Day Camp Pavilions at the Jewish Community Center (1954–59).

JAPANESE MODERN

Bus Tour with Box Lunch – Tour Fee: \$35.00

Friday, October 13, 2000; 12:00 to approx. 6:00 PM

CHARLES A. EVERS, AIA

Senior Associate, Atkin, Olshin, Lawson-Bell and Associates
Architects, Philadelphia

This tour focuses on three unique Japanese and Japanese-American architectural resources in the Philadelphia region. The first is the Nakashima Studio and Showroom in New Hope, begun by the internationally-acclaimed architect and woodworking craftsman, George Nakashima (1905–90), and continued today by his daughter, Mira Nakashima-Yarnall. Following a brief stop (time-permitting) at the nearby studio of architect Antonin Raymond (1888–1976), who practiced in both Japan and the U.S., the tour travels to Fairmount Park in Philadelphia for a visit to *Shōfū-sō* (Pine Breeze Villa), designed by Japanese architect Junzo Yoshimura (1908–97), a former student of Raymond. Based on upper-class homes of the late sixteenth to seventeenth centuries, *Shōfū-sō* was originally constructed in 1953 in Nagoya, Japan, and shipped a year later to New York, where it was exhibited at the Museum of Modern Art. *Shō fū-sō* was reassembled in Fairmount Park in Philadelphia and opened to the public in 1958. The tour concludes with *sake*, served on the veranda of *Shōfū-sō*.

WRIGHT, KAHN, AND BEYOND

Bus Tour with Box Lunch – Tour Fee: \$35.00

Friday, October 13, 2000; 12:15 to approx. 6:00 p.m.

LISA KOLAKOWSKY SMITH

Architectural Historian, National Park Service,
Philadelphia Support Office

Delaware, Chester, and Montgomery counties just west of Philadelphia are rich in architectural treasures, three of which are visited on this tour. The Esherick Studio, a National Historic Landmark, was the home and workshop of one of the nation's most prominent twentieth-century artist-craftsmen, Wharton Esherick (1887–1970). Designed by Esherick himself, the Studio is an organic work of art, "a splendid example of architecture by inclination," as his friend Louis Kahn once described it. Kahn and Esherick collaborated on the design for a separate Workshop building on the Studio grounds, which participants will have an opportunity to view from the exterior. Nearby, on the Bryn Mawr College campus is Erdman Hall dormitory (Louis Kahn, 1960–65), composed of three connecting, diamond-shaped units, each with a

clear distinction between "servant" and "served" spaces, in Kahn's characteristic manner. Finally, there will be a visit to Frank Lloyd Wright's Suntop Houses (1939), a prototype complex of four, two-story private residences, not normally open to the public.

REHABBING THE RECENT PAST

Bus Tour with Box Lunch – Tour Fee: \$35.00

Friday, October 13, 2000; 12:15 to approx. 5:15 p.m.

BONNIE WILKINSON

Historical Architect, Pennsylvania Historical and Museum Commission, Harrisburg

Since its inception in 1976, the Federal Tax Incentives for Rehabilitating Historic Buildings program has become one of the nation's most effective means of promoting urban revitalization. To date, it has been used in the rehabilitation of over 27,000 historic buildings nationwide. This tour will visit three twentieth-century buildings in the Philadelphia area, all successfully rehabilitated for compatible new uses with the aid of the Investment Tax Credit program: the Thomas Dunlap Public School, converted to elderly, affordable housing; the Elverson Building at the Philadelphia *Inquirer* newspaper complex, rehabilitated for office space; and Building 101 of the Philadelphia Naval Shipyard, originally the administrative office for marine corps personnel and the barrack's for enlisted men, now the offices of a local architectural firm, the Vitetta Group, who will host a reception at the conclusion of the tour. Project representatives will be available at each of the buildings to provide insight into the work and to answer questions about each project.

HIGH-RISE LIVING

Bus and Walking Tour – Tour Fee: \$25.00

Friday, October 13, 2000; 1:00 to approx. 6:00 p.m.

GARY SACHAU

Architectural Historian, National Park Service, Heritage Preservation Services, Washington, DC

This tour highlights some of Philadelphia's most fashionable twentieth-century apartment buildings. The first stop will be elegant Rittenhouse Square, where participants will visit some of the most prestigious residential addresses in the City. The group will have an opportunity to view lobbies and private apartments in a number of apartment buildings, which date from 1913 to 1951 and represent architectural styles from Beaux Arts to Art Deco and International. Following this, participants will travel to Alden Park (Edwyn Rorke,

1925), the first apartment complex in the country to be built in a park-like setting. Situated on thirty acres overlooking the Wissahickon Valley, this cluster of apartment towers was created as a luxury cooperative, complete with formal gardens, a nine-hole golf course, and year-round swimming pool. Participants will also learn about the recent rehabilitation of the complex.

VENTURI & KAHN IN CHESTNUT HILL

Bus and Walking Tour with Box Lunch – Tour Fee: \$35.00

Friday, October 13, 2000; 12:30 to approx. 5:00 p.m.

EDWARD LANE, AIA

The Foundation for Architecture, Philadelphia

This tour will visit the legendary Vanna Venturi House in the Chestnut Hill section of Philadelphia. Designed in 1962 by Robert Venturi for his mother, this building is one of the earliest expressions of Post-Modernism in the country. Participants will also have the opportunity to view the exterior of the nearby Margaret Esherick House (Louis Kahn, 1959–61), a modest-size structure noted for its creative use of natural light. A visit to another of the area's private residences, not normally open to the public, is also scheduled, this one in Linden Court (Edmund B. Gilchrist, 1885–1953), designed for entrepreneur George Woodward, an authority on middle class housing and a major force behind the orderly development of Chestnut Hill in the first half of the the twentieth century.

AIA CONTINUING EDUCATION SYSTEM (AIA/CES)

	LU Hrs.	HSW
Preserving the Recent Past 2 Conference	24	21
Curtain Wall Symposium	12	12
Coatings for Architectural Surfaces Workshop	13	13
Historic Concrete Workshop	14.5	14.5
Twentieth-Century Sculpture Workshop	14.5	12

All attendees can receive credits. The Association for Preservation Technology International is a Registered Provider with the AIA Continuing Education System (AIA/CES). The components of this program are registered for the AIA Learning Unit Hours (AIA LU Hours) and Health, Safety, Welfare (HSW) requirements shown above.

THE ESSENTIALS

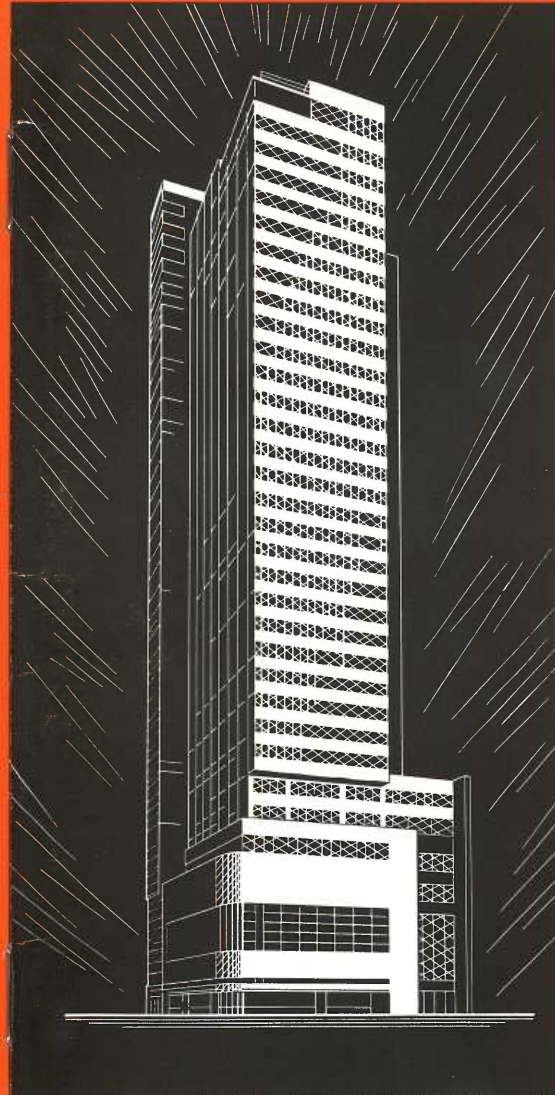
CONFERENCE, WORKSHOPS, SYMPOSIUM AND TOURS

- Website:
<http://www2.cr.nps.gov/tps/recentpast2.htm>
- Telephone: (202) 343-6011
- Register before September 8 for savings

HOTEL INFORMATION

- Loews Philadelphia Hotel (PSFS Building)
- For hotel reservations, call (215) 627-1200 and reference "Preserving the Recent Past 2 Conference"
- Make reservations before September 8 for special discounted room rates
- Address: 1200 Market Street, Philadelphia

Front cover: PSFS Building (Howe and Lescaze, 1932),
drawing by Baldwin, courtesy of The Architectural Archives
of the University of Pennsylvania



THE RECENT PAST 2

PRESERVING

PRESERVING THE RECENT PAST 2
P.O. BOX 75207
WASHINGTON, D.C. 20013-5207

PHILADELPHIA, PENNSYLVANIA

OCTOBER 11-13, 2000